



ZURFLÜH-FELLER

# Curtain locking accessories



## Fitted intermediate laths

Discover safety  
made by ZF®



Item no. H809AC

Available dimensions: 990 1490 2990

Colours available\*: White 9010 & 9016, Brown 8019, Black 9005, Grey 7016,

Raw machined versions supplied without lock in same dimensions: contact us.

## Accessories for retail sale

### Lock for intermediate lath



Item no. H811CAA



- + White 9010
- + Brown 8019
- + Black 9005
- + Galvanized finish: H811CA

### Lift grip to be flush-mounted



Item no. H811F



- + White 9010
- + Brown 8019
- + Black 9005
- + Grey 7016

### Finishing plate



Item no. H811P



- + White 9010
- + Brown 8019
- + Black 9005
- + Grey 7016

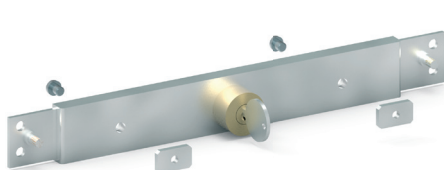
### Rectangular bar for lock



Item no. H808

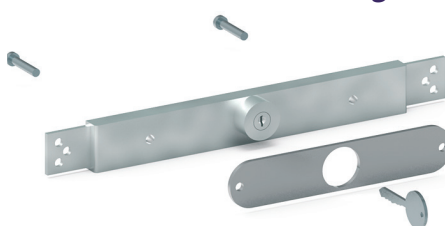
## Accessories for end slat

### Lock with studs for grooved lath



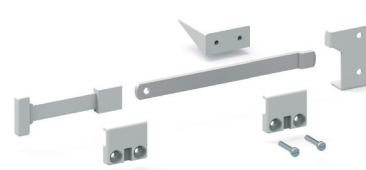
Item no. H811B

### Lock for face mounting



Item no. H811

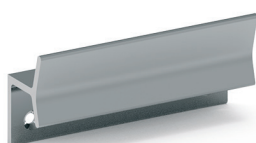
### Lock for end slat



Item no. H816

## Accessories for direct pulling

### Handle for direct pulling



Item no. H220

### Pole for direct pulling



Item no. E192AA

\*All colours are specified in RAL codes



11 Rue des Herbiers  
25190 Noirefontaine - France  
Tel.: +33 (0)3 81 99 33 00  
Fax: +33 (0)3 81 99 33 40  
[std@zurfluh-feller.com](mailto:std@zurfluh-feller.com)  
[www.zurfluh-feller.fr](http://www.zurfluh-feller.fr)